

Supplementary Materials for:

Ethnoarchaeological replication Experiments show knives manufactured from frozen human feces do not work

Metin I. Eren^{1,2*}, Michelle R. Bebber¹, James D. Norris¹, Alyssa Perrone¹, Ashley Rutkoski¹, Michael Wilson¹, Mary Ann Raghanti¹

Correspondence to: meren@kent.edu

This file includes:

Tables S1

Figs. S1 to S9

	Day	Time	Food	Fecal sample
M.I.E. diet	1	1 pm	Eggs	--
		4 pm	Beef snack bites	--
		6 pm	Beef steak	--
	2	9 am	Turkey snack bites	--
		11 am	Beef steak	--
		7pm	Salmon and beef fillets	--
	3	9 am	Beef fillet	--
		12 pm	Beef snack bites	--
		6 pm	Salmon, butternut squash risotto, broccolini	--
	4	9 am	Beef salami	--
		1 pm	--	Collected
		4 pm	Applesauce	--
		5 pm	Turkey kielbasa	--
	5	9 am	Turkey sausage	--
		11 am	Macaroni and cheese	--
		2 pm	--	Collected
		8 pm	Chicken thighs	--
	6	8 am	Chicken thighs	--
		2 pm	Angus beef meatballs	--
		6 pm	--	Collected
	7	8 am	Turkey sausage	
		9 am	--	Collected
		12 pm	Salmon and perch fillets	
		1 pm	--	Collected
	8	8 am	--	Collected
M.R.B. diet	1	7 am	Yogurt	--
		11 am	Lentils and rice	--
		5 pm	Spaghetti and meat sauce	--
	2	7 am	Bagel and cream cheese	--
		12 pm	Cheeseburger	--
		6 pm	Double cheeseburger and onion rings	--
	3	7 am	--	Collected

Table S1. The diet and fecal sample collection schedule of M.I.E. and M.R.B.



Fig. S1. For some of the fecal knives, ceramic molds were created by pushing a sharp stone blade into fresh Standard #103 earthenware potter's clay. The molds were then fired in an Skutt automatic electric kiln (model KM-1027) to cone 02 (1199 C) on slow speed.



Fig. S2. A cross section of frozen feces in the fired ceramic mold (M.I.E.).



Fig. S3. An example of a “hand-shaped” knife blade (M.I.E.).



Fig. S4. An example of a frozen feces blade from the ceramic mold after having been sharpened with a metal file (M.I.E.)



Fig. S5. Knives from the ceramic molds failed to cut or slice the pig hide, leaving only streaks (M.I.E.).



Fig. S6. The “hand-shaped” knife blades also failed to cut through the pig hide (M.I.E.).



Fig. S7. Another example of a “hand-shaped” knife during sharpening with a metal file (top) and after freezing (bottom) (M.R.B.).



Fig. S8. A frozen blade in dry ice (top); another failed attempt to cut through the pig hide (bottom) (M.R.B.).

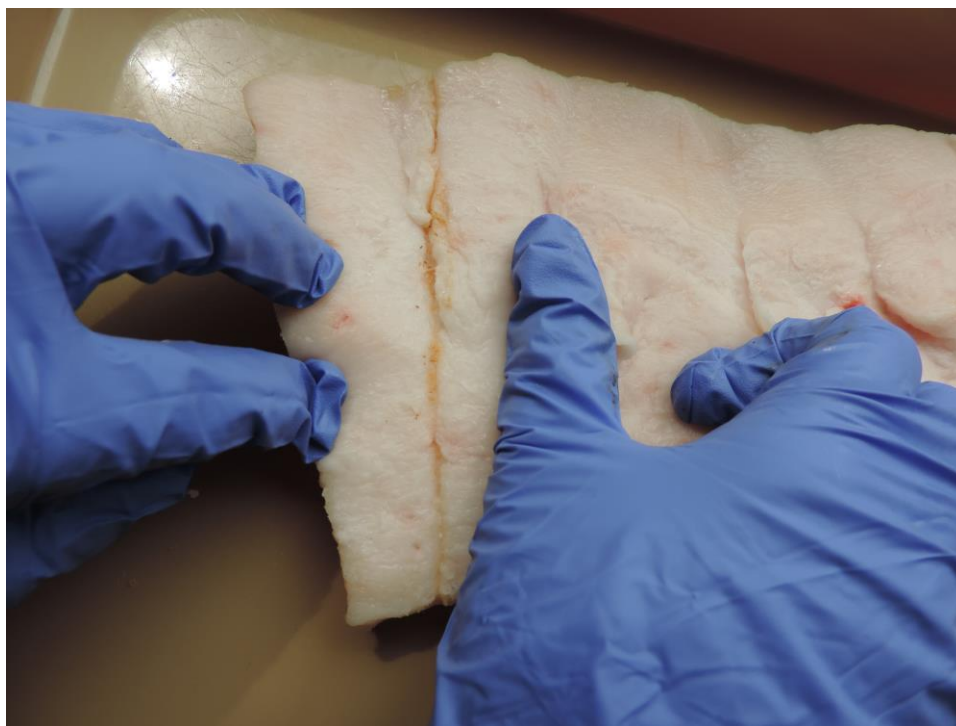


Fig. S9. A shallow slice could be produced in the subcutaneous fat on the underside of the hide, but the knife-edge still quickly melted and deteriorated (M.R.B.).